

# Offshore Business



## Iberdrola Supply Chain Update



June 2013

# Contents

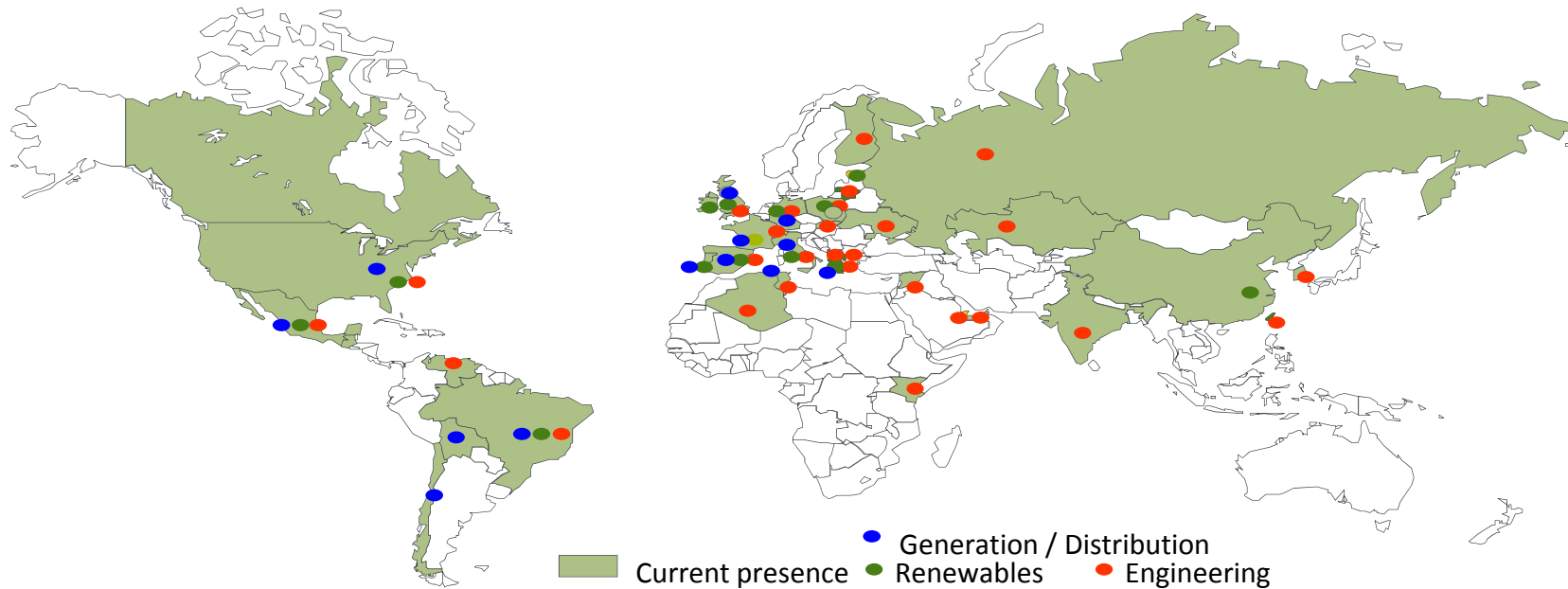
1. Iberdrola
2. Iberdrola Offshore
3. Supply Chain Objectives
4. Wikingen
5. St Brieuc
6. East Anglia Zone
7. East Anglia ONE



# Iberdrola, a global energy leader



Fifth largest global utility – over 46 GW of generation in more than 20 countries



World's No. 1 renewable energy developer - 13.5 GW installed wind

# Iberdrola Offshore



## WoDS, UK - 195 MW

- 389 MW 50% JV with DONG
- Fully consented
- Construction start spring 2013
- 1<sup>st</sup> export December 2013
- All key contracts in place

## Wikinger, Germany – 350 MW

- Full Consent 2014
- Construction Commences 2015
- 1<sup>st</sup> export December 2016

## St. Brieuc, France - 500 MW

- 70% owned JV with Eole Res
- Offshore Construction 2018
- 1<sup>st</sup> export 2019

## R3 East Anglia1, UK - 600MW

- 1.200 MW 50 % JV with Vattenfall
- Offshore Construction 2017
- 1<sup>st</sup> export 2018

and a strong pipeline for 2020 and beyond

# Supply Chain Objectives

We are looking for suppliers that:

1. make Health and Safety their absolute priority
2. have credible Cost of Energy reduction plans:
  1. Improved design and innovation
  2. Better cooperation between and with suppliers – pre and post contract
  3. Efficient construction and O&M
3. have technology that will be proven and reliable that can be delivered when we need it

In return we will seek to:

1. Place contracts that strike an appropriate risk balance
2. Incentivise suppliers to deliver savings
3. Establish long term relationships with those suppliers who perform well – discussions are ongoing now

# Wikinger – 350MW First Export 2016

- 100% Iberdrola
- WTG: Preferred Supplier AREVA - supply, transport, installation and service.
- Electrical: Offshore Substation /Array Cables – Integrated by Iberdrola
- Array Cables: supply and installation ITT in process.
- Foundations
  - own design, tenders ongoing to manufacture and Install
- Installation and Logistics Ports
  - Negotiations with local ports to establish preassembly, construction and O&M bases.

**WIKINGER SUPPLY CHAIN MANAGER: THANOS KOUREMENOS.**  
**tkouremenos@iberdrola.gr**

# St Brieuc – 500MW First Export 2019



- Ailes Marines (70 % Iberdrola, 30 % Eole RES) is developing St. Brieuc in the French Brittany.
  - Partnership with Neoen Marine for the development phase
  - Exclusive partnerships with AREVA for WTG.
  - Strategic partnership with Technip for Engineering, Construction and Installation and with STX / Eiffage for Foundations and Offshore Substation
- Project currently in development phase, consent expected 2015

**ST BRIEUC SUPPLY CHAIN MANAGER:**

**SALVADOR FERNANDEZ. [sfernandezu@iberdrola.es](mailto:sfernandezu@iberdrola.es)**

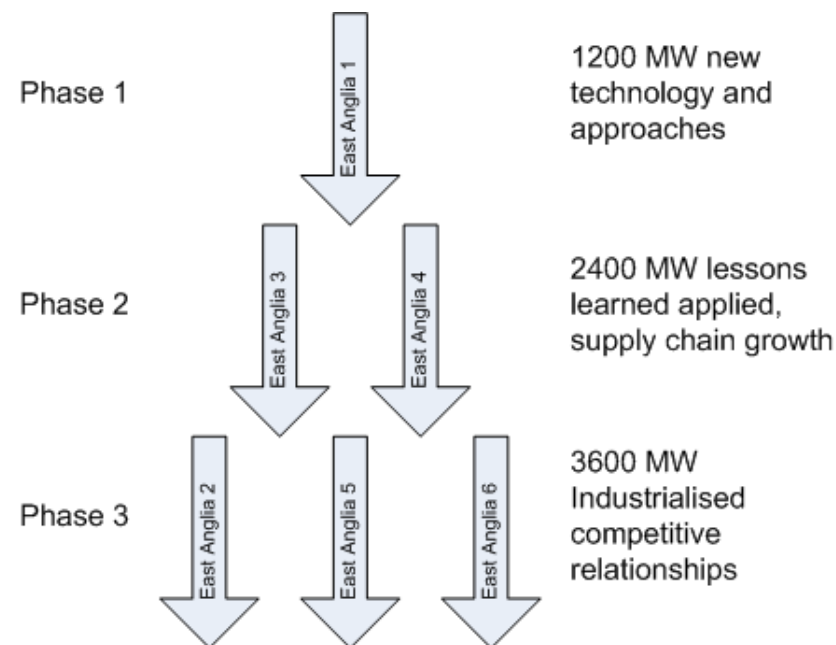


# East Anglia Zone

- JV with Vattenfall
- A 7200 MW target capacity
- Development continues to 2018
- Potential for 10 years of construction
- 7200 MW grid connection secured
- Three Phased Approach
- Cost savings expected to increase as phases progress

Register your interest at:

<http://www.eastangliawind.com/supplier-registration.aspx>

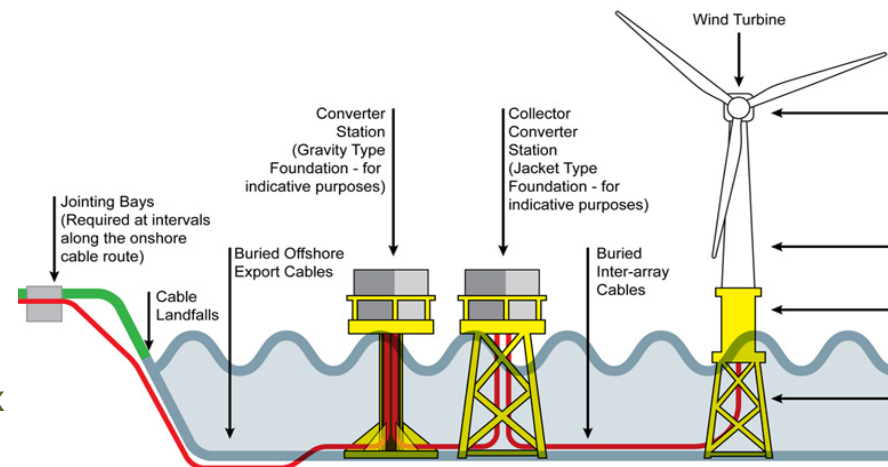
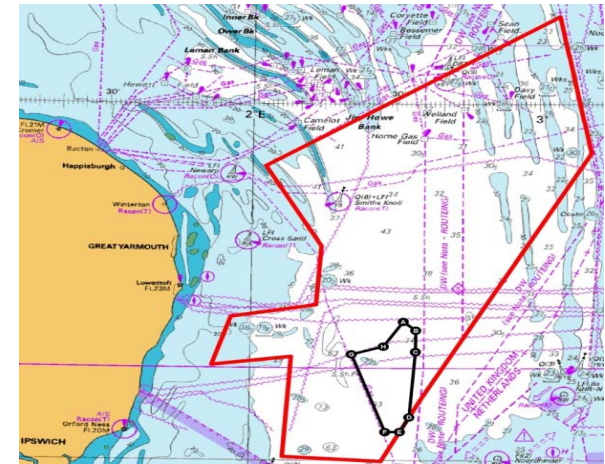




# East Anglia ONE – upto 1200MW First Export 2018



- Planning consent - mid 2014
- Detailed SI starts this summer
- Engineering services being procured now
- WTG & Grid tenders underway
- Foundation Tender commences Q4 2013
- Array Cabling Tender commences Q1 2014
- Construction and O&M Port selection ongoing - local to East Anglia
- Marshalling ports in supplier scopes



Register your interest at:

<http://www.eastangliawind.com/supplier-registration.aspx>